

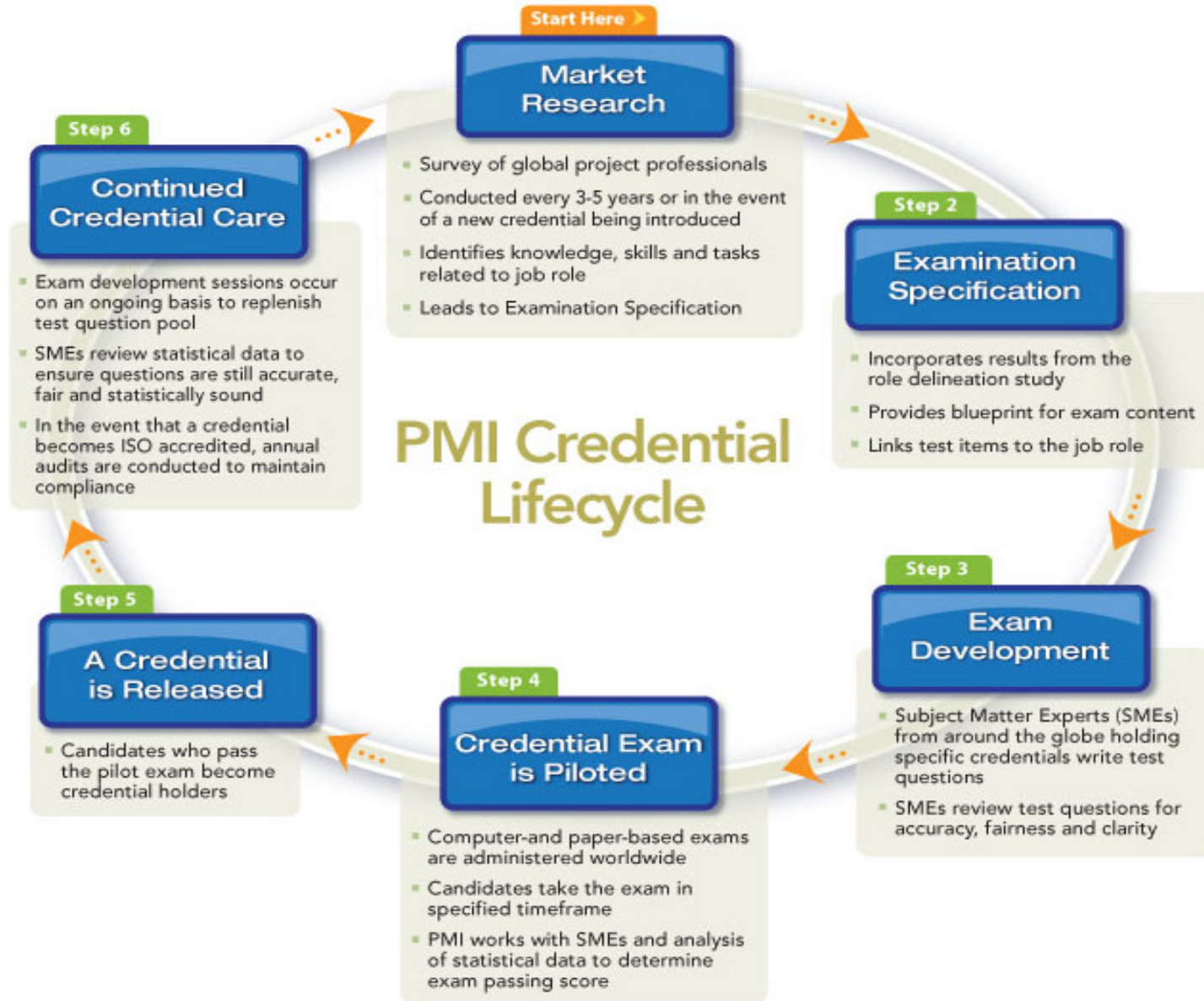
Project Management Professional Certificate (PMP) Introduction

3rd March 2010

PMP Certificate Background

- PMP is Project Management Institute (PMI) Credential in USA
- PMI was found since 1969 and PMP Certification was established on 1984 as a first certification
- PMI's certification program maintains an **ISO 9001** accreditation
- More than a half million members and credential holders from over 170 countries

PMI Credential development and Maintenance Process



PMI Family Credentials

- Certified Associates in Project Management (CAPM®)
- Project Management Professionals (PMP®)
- Program Management Professionals (PgMP) ®
- PMI Risk Management Professional (PMI-RMP):
- PMI Scheduling Professional (PMI-SP)

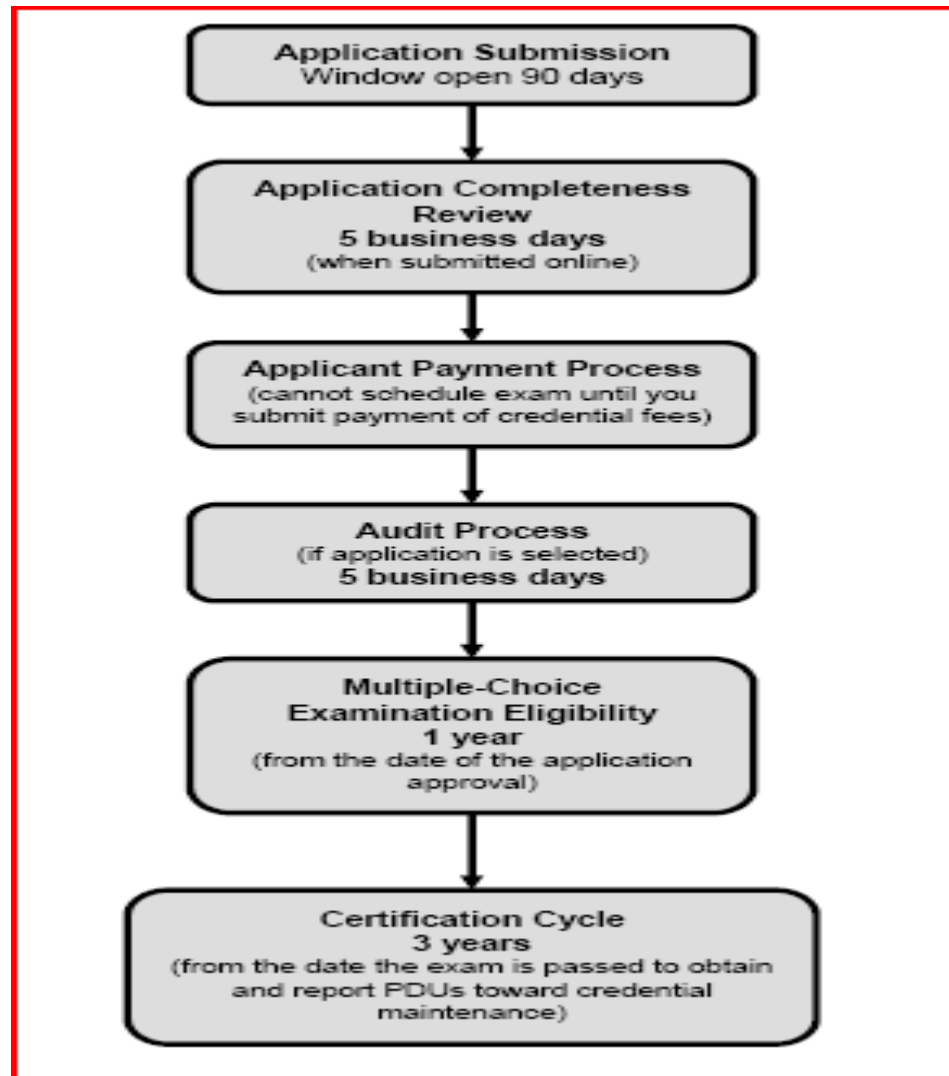
PMP Certification

- The PMP® credential recognizes demonstrated knowledge and skill in leading and directing project teams and in delivering project results within the constraints of schedule, budget and resources.
- Who should apply?
 - Those who lead and direct cross-functional teams to deliver projects within the constraints of schedule, budget, and scope.

PMP Knowledge Areas

- Integration Management
- Scope Management
- Time Management
- Cost Management
- Quality Management
- Human Resource Management
- Communication Management
- Risk Management
- Procurement Management

PMP Credential Process



PMP Examination information

- Comprise of 200 multiple choice questions
 - 175 are scored questions
 - 25 are Pretest questions
- 4 Hours examination time
- Examination blueprint

Domain	Percentage of Questions
Initiation	11%
Planning	23%
Executing	27%
Monitoring and Controlling	21%
Closing	9%
Professional and Social Responsibility	9%

- Passing criteria is depend on difficulty of each examination

PMP Eligibility Requirement

Educational Background	Project Management Experience	Project Management Education
High school diploma, associate's degree or global equivalent	Minimum five years/60 months unique non-overlapping professional project management experience during which at least 7,500 hours were spent leading and directing project tasks*	35 contact hours of formal education
OR		
Bachelor's degree or global equivalent	Minimum three years/36 months unique non-overlapping professional project management experience during which at least 4,500 hours were spent leading and directing project tasks*	35 contact hours of formal education

PMP Credential Fees

Exam Administration Type	PMI Member Status	US Dollars	Euros
Computer-based testing (CBT)	member	\$405	€ 340
Computer-based testing (CBT)	nonmember	\$555	€ 465

Certification Cycle and Continuing process

- Certification is active on the day you pass examination for 3 full years
- In order to maintain PMP, Credential holder need to collect 60 Professional Development Unit (PDU) during 3 years cycle.
- PDU Categories
 - Formal Academic Education
 - Professional Activities and Self-directed Learning
 - Courses offered by PMI Registered Education Providers/PMI Components
 - Courses offered by Other Education Providers
 - Volunteer Service to Professional or Community Organizations

Q&A

PMI web site: www.pmi.org